

A prologue to the application of adobe Photoshop filters on ancient palm leaf manuscripts

R Gnanasekaran

Assistant Professor, Department Of English, Karpagam University, Coimbatore, Tamil Nadu, India

Abstract

The art of writing on palm leaves is one of the oldest established mediums in South India. In fact it plays a significant role for writing and painting in South and Southeast Asian nations that include Nepal, Sri Lanka, Burma, Thailand, Indonesia and Cambodia. A significant number of the antiquated written works in Tamil language have been discovered just as palm leaves. These written phenomena are found very delicate or hard to use for research and reading purposes. Then how can we overcome from it? The answer is simple. The digitalization is the only way which paves us a path to read and understand all of these obscure and archaic writings. The paper tries to give a prologue to the utilization of Adobe Photoshop filters with a significant reference to its applications on Tamil antiquated original palm leaf manuscripts.

Keywords: palm leaf manuscripts, digitization, adobe photoshop, filters

Introduction

The paper is going to speak on the applications of some basic filters on palm leaf texts. The basic filters include Auto toning, high definition, Variations, Shadowing and Highlighting, Inverting and Gray scaling in order to digitalize the ancient texts and books for future research purposes. Through these filters, we can easily read, interpret and decipher the archaic texts which are in the form of palm leaf manuscripts. In fact these filters are not only deciphering and clarifying the text but also they help us to go with the digitalization of palm leaf texts.

Auto Toning

The Auto Tone command, uses a bit of integrated Photoshop intelligence to adjust the levels of the image automatically. The Auto Tone works best with normal JPEG pictures. It characterizes the extremely lightest and darkest pixels of each of the three hues as white and dark, separately, and after that it structuralizes the midtone pixels in the middle. While it adjusts the tones in the picture, the Auto tone command look for any opening of shading cast. And also we can calibrate the shading physically after Auto Tone has done its work. The following images clearly portray the difference between the actual and the Auto Toned. The application of the Auto Toned filter enhances the image automatically through the incorporated programming in the Photoshop software

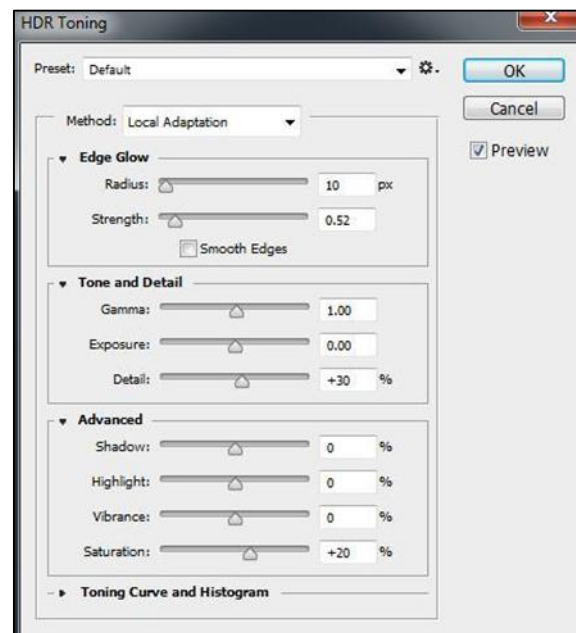


Original



Auto Toned

HDR Toning



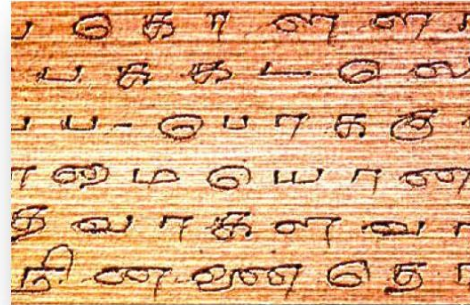
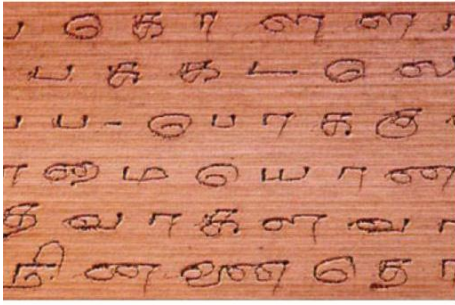
The HDR Toning in Photoshop CS6 can be applied to give a picture, a stylized HDR impact. The HDR Toning will just deal with a flattened photo file, yet for more prominent adaptability we'd like the impact on its own layer, with the first picture underneath. So we have to work around by making a copy of the original image or the first image.

Adjusting HDR Toning:

The HDR Toning command lets you applying the full range of HDR contrast and exposure settings to individual images. It is a command HDR toning which requires flattened layers. If we want it to be applied on the image, the following procedures should be followed.

Open a 32, or 16, or 8-bit image in RGB or Grayscale color mode. Then choose Image > Adjustments > HDR Toning. Once the filter is applied the following results can be found. In the

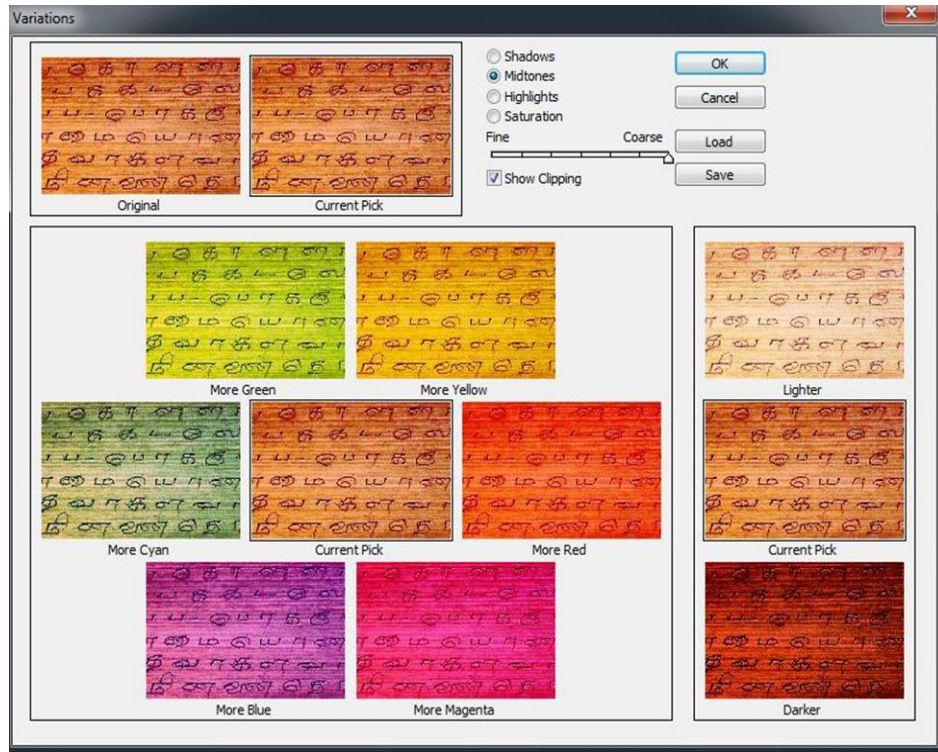
below images, we can differentiate the difference between the original (L) and the HDR toned image (R).



Variations

‘Variations’ is an incredible effect for "light" shading corrections in Photoshop. It is one of the important options in the Photoshop that rolls out the improvements to the layer itself. In order to prevent the damaging of the original file, just copy the

entire layer as a separated one before starting editing. If we want to carry out or to be applied on the image, we should go to the Image menu, then Adjustments, and afterward Variations. Now we shall see the ‘Variations’ board, which will look something like this:

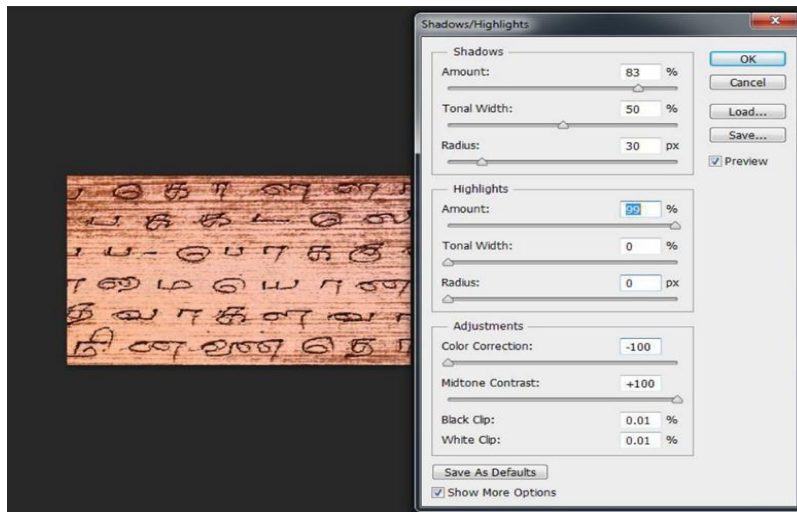


The Enhancement of Shadowing and Highlighting:

First Pick Image > Adjustments > Shadow/Highlight. Verify whether the Preview option is chosen in the dialog box. It seems very important to clarify the side by side processes. Or else the result may vary of what we actually expecting. The Shadow/Highlight command is a strategy for rectifying photographs with silhouetted pictures, because of the solid backdrop illumination or amending subjects that have been marginally washed out on the grounds since they were too close to the camera flash. The modification can also be utilized for lighting up ranges of shadow in a generally well lit picture. The Shadow/Highlight command does not just help or obscure a picture; but also helps or obscures taking into account the

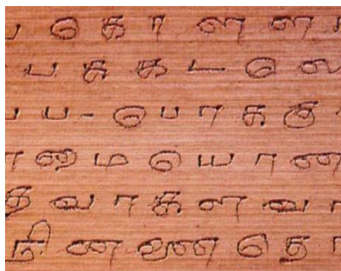
encompassing pixels (neighborhood) into the shadows or highlights. With the result of this, here comes the divided control of the shadows and the highlights that can enhance the photography in a quite interesting manner. The defaults are situated to settle pictures with the backdrop illumination issues. The Shadow/Highlight order additionally has a Midtone Contrast slider, Black Clip choice, and White Clip option to confirm the general differentiation of the picture, and the color correction slider for modifying immersion. Remember that the Shadow/Highlight order applies modification straightforwardly to the picture and will toss picture data. For nondestructive picture alterations, it is prescribed to work in a different layer or Camera Raw.

Shadowing and Highlighting

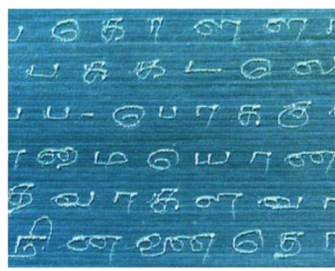


Inverting

The Invert tool in the Photoshop can create very interesting color effects on the image. Changing over a photo to a negative in Photoshop is entirely simple. It's absolutely worth taking to figure out how to change over a photograph into a negative in Photoshop. The same system can be utilized to transform a film negative into a full shading picture in the event that you need.



Original



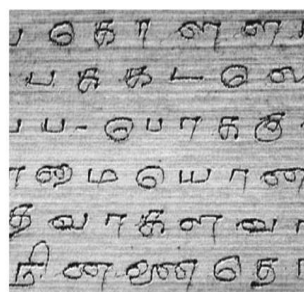
Inverted

Grayscale Mode

Grayscale let you control how hues are changed over to shades of grey. Use them to get the right differentiation and disposition in your photographs. A typical issue in highly contrasting photography is that some hues look very much alike when changed over into grayscale. For instance, a few shades of red, green, and blue look totally changed in shading, however very nearly indistinguishable in highly contrasting. This can result in articles in a high contrast picture to mix into each other, abandoning you with a photograph which is flat and lifeless, and lacking in contrasts, details and definition



Original



Grayscale

Conclusion

Photoshop is the most driving and prominent graphical software programming which was developed by the Adobe group and is utilized to edit various types of pictures, photos, and so forth. The product Photoshop was made by Thomas Knoll in 1987. Photoshop have numerous uses: to rectify the old and damaged photos and set them up for printing or web, outline website pages, cut pages (make hyperlinks), you can also make gif lively, can work with features such as 3D substance in the extended edition. And also we can use this advanced software for making the ancient palm leaves as a readable one through digitization. In fact the day which we live now is a digital world. In other words we can't neglect certain essential things in technology, and in fact modern technology alone makes us to go in a right and ethical way.

Reference

1. Basak. 2006 J. Basak, K. Bhattacharya and S. Chaudhury, "Multiple Exemplar-Based Facial Image Retrieval Using Independent Component Analysis," in *IEEE Transactions on Image Processing*. 2006; 15(12):3773-3783.
2. Cheng, S. Cheng, W. Huang, Y. Liao and D. Wu, "A Parallel CBIR Implementation Using Perceptual Grouping Of Block-based Visual Patterns," in *IEEE International Conference on Image Processing - ICIP*. 2007, 164-161.
3. Flickner M, Flickner H, Sawhney W, Niblack J. Ashley, Q. Huang, *et al* "Query by image and video content: the QBIC system," in *Computer*, 28(9):23-32, 1995.
4. Martin D, Martin C, Fowlkes D, Tal J, Malik, "A Database of Human Segmented Natural Images and its Application to Evaluating Segmentation Algorithms and Measuring Ecological Statistics," in *ICCV*, 2001.
5. Veltkamp RC, Veltkamp M, Hagendoorn, "State-of-the-Art in Shape Matching," in *Multimedia Search: State of the Art*, Springer-Verlag, 2000.